

Maynooth University

INCOMING EXCHANGE FACTSHEET 2025/2026

Address

International Office,
Humanity House, South Campus,
Maynooth University,
Maynooth, Co. Kildare, Ireland

Email

incoming.exchange@mu.ie

Website

<https://www.maynoothuniversity.ie/international>

ERASMUS+ Code

IRL MAYNOOT01

Follow us on Social Media!



[@maynoothuni_international](https://www.instagram.com/maynoothuni_international)



[@maynoothuniversityintl](https://www.tiktok.com/@maynoothuniversityintl)



[MaynoothUniversityInternational](https://www.facebook.com/MaynoothUniversityInternational)



IG: [@esn_maynooth](https://www.instagram.com/esn_maynooth)





Maynooth University

Applying to Maynooth University

- Students wishing to study at Maynooth University as exchange students must **first be nominated** by their home university.
- Nominations open in **mid-March**. The nomination link will be emailed to the partner university directly.
- Nominated students will be **contacted with information** regarding their stay with us and instructions on how to apply.
- **An acceptance email** will be sent to students a few weeks **after** the application deadline date.

Nomination Deadlines

Full Year: 1st May 2025

1st Semester (Fall): 1st May 2025

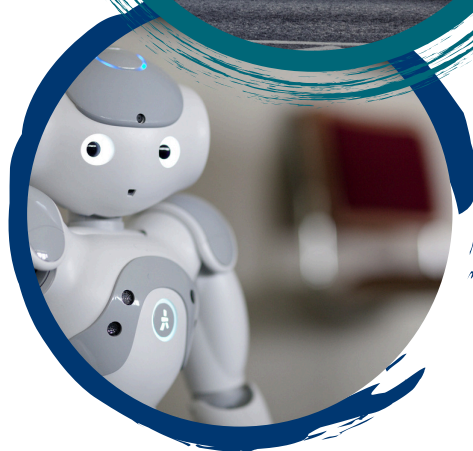
Second Semester (Spring): 1st October 2025

Application Deadlines

Full Year: 31st May 2025

1st Semester (Fall): 31st May 2025

Second Semester (Spring): 31st October 2025



Maynooth University

Available Courses

- Our **list of available courses** can be found **[here](#)** and all incoming exchange students are **free to choose modules from any Academic Department**.
- Modules must be **approved by your home university**.
- Some courses have **limited spaces** available, such as **Product Design** and **Media Studies**.
- It is the **student's responsibility** to ensure that there are enough courses on our available courses list that their home university will approve of.
- Students are allowed to register for **max 35 ECTS per semester**.
- There will be an **add/drop period** at the beginning of each semester.





Maynooth University

Language Proficiency

- **No language proficiency certificate is required.**
- We accept a **nomination from the home university as confirmation** that a student has acquired a good command of the English language.
- Students are expected to have a **good command of English** in all four language skills - **reading, writing, listening and speaking** - to follow classes, write assignments, give presentations, etc.
- **Note:** Exchange students will be **marked the same way as domestic students**, with **no exceptions**.





Maynooth University

Accommodation

- As demand for on-campus accommodation far exceeds the number of beds available, **students should concentrate their accommodation search off-campus.**
- Our **Student Services** offer advice and information via **webinars** on how to find suitable off-campus accommodation during your stay at Maynooth University.
- Students will receive an email invitation to attend these webinars **approximately 3 months in advance of arriving in Ireland.**
- Students will receive **login details** for our off-campus accommodation portal, Maynooth Studentpad, after attending the webinars.
- **Maynooth Studentpad** is an online platform where local landlords and homeowners can advertise their lettings to students attending Maynooth University.



Maynooth University

Travel/Medical Insurance

- All incoming exchange students must have travel insurance which includes **repatriation** (assisted return back to the home country).
- All incoming exchange students should have insurance that covers them for the **entire duration of their stay**.
- **Erasmus** students must also have private travel insurance. The **European Health Insurance Card (EHIC)** alone will **not** suffice, as it does **not include repatriation**.
- **Full Year** and **Semester 1** students will be required to upload their proof of insurance in **September**.
- **Semester 2** students will be required to upload their proof of insurance in **February**.



Maynooth University

Immigration

- Some students may require a visa to come to Ireland. If you are unsure of whether you require a visa or not, please check the Irish Immigration website [here](#). Note: US, Canadian and Australian students do not require a visa to enter Ireland.
- Students who are coming from **outside the EEA / EU / Switzerland** will need to **register with Irish Immigration** and **obtain an Irish Residency Permit (IRP) Card**. This process happens *after you have arrived* in Ireland. Please see our [immigration webpage](#) and the [official Irish Immigration website](#) for more information.
- **IMPORTANT NOTE:** Though Ireland is a member of the EU, *it is not a member of the Schengen Area*. Erasmus students who are non-EU citizens, but hold a residency permit for another EU country, will need a visa to enter Ireland. They will also have to register with Irish Immigration and obtain an IRP Card.



Maynooth University

Other Important Information

- Attendance at **Orientation** sessions are **mandatory**. Students will receive essential information regarding their time at Maynooth University.
- Please see '**Important Dates**' for information on term dates, study periods, holidays and exam periods.
- Semester 1 students **cannot extend their stay to the full academic year** once they have **registered** with Maynooth University.
- Semester 1 students **will not complete their exams in January**. Instead, alternative arrangements will be made, and Semester 1 students will **end their stay** at Maynooth University in **December**. Generally, this means that students will submit an alternative assignment instead of taking an exam, but this will be *decided between the student and the lecturer/professor*.

