

Student Feedback Matters!

What is Student Feedback?

Student feedback is any information, formal or informal, that is provided by students on their experiences of teaching and learning.

Good Quality Student Feedback:

- Generates ideas that can enhance teaching.
- Provides staff with information on what is working well in a module or programme.
- Encourages students to become active learners and to reflect on their role in the learning process.
- Promotes partnership between students and staff within the University.



Feedback Tip: Use a Variety of Feedback Methods.

Different students prefer giving feedback in different ways. Employing a portfolio of methods allows many students to have a voice.

Using several different methods provides a variety of data and a range of different perspectives.

No feedback method is perfect. Employing more than one allows a more complete and reliable picture of teaching and learning to emerge.

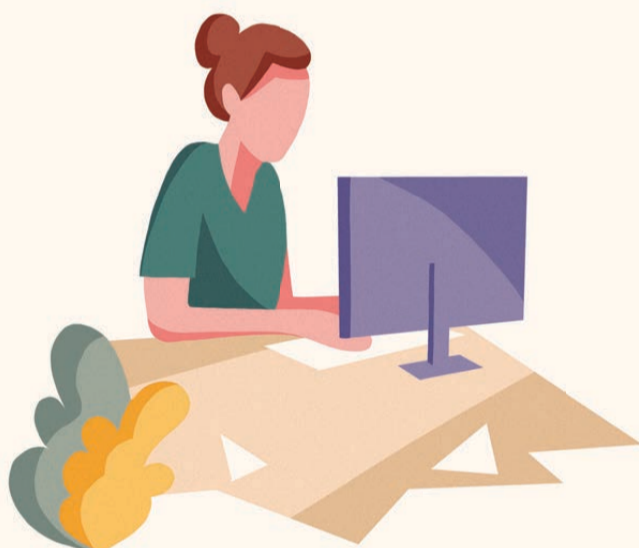
Feedback Tip: Promote Inclusion.

Assess your feedback methods to ensure they are as inclusive as possible:

- Are there opportunities for shy or less confident students to express their views?
- Are there opportunities for students who are less frequently on campus to participate?

Ensure student anonymity is protected.

Direct students to training resources available on feedback to help boost their confidence.



Feedback Tip: Close the Feedback Loop.

Respond to the feedback given:

- Is it possible to make changes to your module or programme in response to student recommendations?
- If recommended changes are not feasible or desirable, explain to students why this is the case.

At the start of the module or programme, explain when, how, and why feedback will be gathered.

Seek feedback early enough to be able to respond to students' concerns.

Feedback Tip: Choose Feedback Methods that Work for your Discipline.

Avoid using generic surveys with questions that do not relate to your discipline.

Think about whether the feedback methods you would like to use will work for the classes you teach:

- Will you need to adjust the methods used because of the size of the class?
- Will some classroom environments be more conducive to seeking feedback than others?



For more information see [Student Feedback and Teaching Evaluation Initiative](#).