

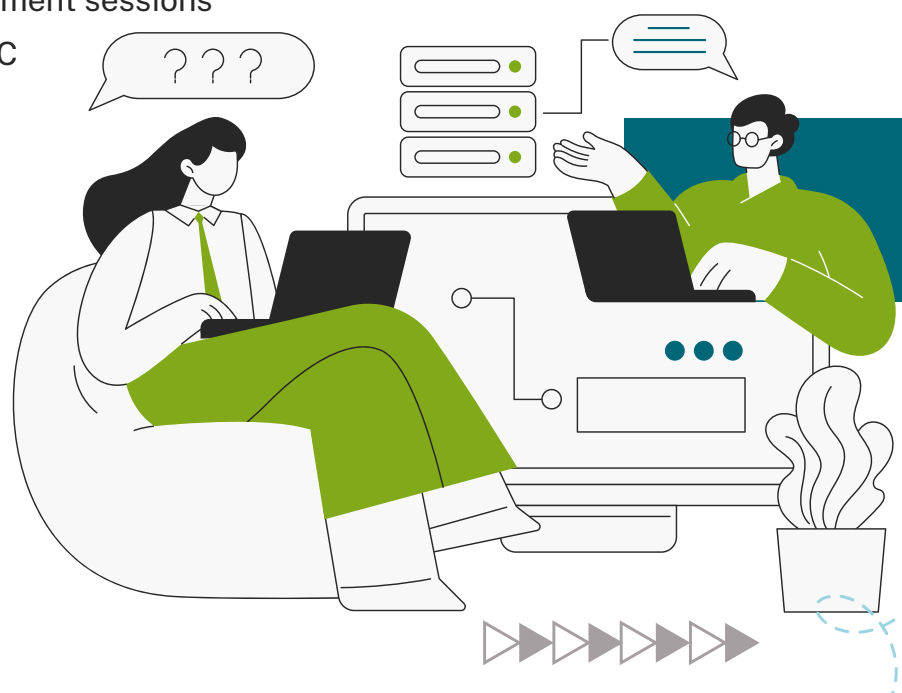
The Maynooth University approach to Writing-Enriched Curriculum (WEC)

Writing-Enriched Curriculum or WEC ‘is a facilitated process designed to support the integration of relevant writing and writing instruction into departmental curricula and to increase the rate at which students’ writing meets local faculty expectations’ (Flash, 2021, p.18). Using WEC scholarship and practice, the Maynooth University Centre for Teaching and Learning (CTL) aims to collaborate with colleagues to support the development of student writing. The situation of WEC within the Centre for Teaching and Learning highlights that this approach to supporting students as writers is contextualised in both writing and T&L scholarship, and that it is concerned not only with student writing but with professional learning for staff.

CTL’s intentional move towards WEC builds on our staff-facing work to date where we have collaborated with academic colleagues on a range of interventions to support student writing.

THE WEC FUNCTION IN MU CTL:

- ▶ Supports staff with the integration of writing-to-learn into their teaching
- ▶ Works with staff to develop discipline-specific writing resources
- ▶ Provides professional development sessions for staff around exploring WEC
- ▶ Collaborates with staff on module-/semester-/year-long discipline specific academic writing interventions for students
- ▶ Engages in research on WEC and related topics





Our approach is influenced by work happening in the US some of which is captured in the WAC Clearing House publication Writing-Enriched Curricula: Models of Faculty-Driven and Departmental Transformation (2021) edited by Chris Anson and Pamela Flash.



References

Anson, C. M., and Flash, P. (eds.) (2021). Writing-Enriched Curricula: Models of Faculty-Driven and Departmental Transformation. The WAC Clearinghouse; University Press of Colorado.



Writing-Enriched Curriculum (WEC) is a Maynooth University Centre for Teaching and Learning (CTL) professional learning and curriculum initiative towards supporting students as writers.

How to cite this resource:

Centre for Teaching and Learning (2024). 'The Maynooth University approach to Writing-Enriched Curriculum (WEC)', Maynooth: Maynooth University.



CC BY-NC-SA: This license allows re-users to distribute, remix, adapt, and build upon the material in any medium or format for non-commercial purposes only, and only so long as attribution is given to the creator. If you remix, adapt, or build upon the material, you must license the modified material under identical terms.

