

Careers and
Employability Service

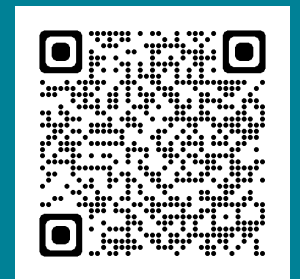


**Ollscoil
Mhá Nuad**
Ollscoil na hÉireann
Má Nuad

Postgraduate Study



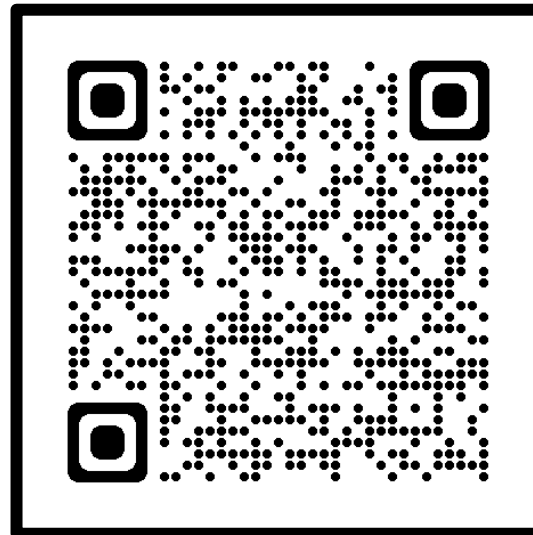
Natasha Marron
Careers Adviser
careers@mu.ie



Where to find information

As a good starting point visit our website -

Careers & Employability Service website -
<https://www.maynoothuniversity.ie/careers/students/postgraduate-study>



A screenshot of the Maynooth University Careers & Employability Service website. The top banner features the word "SUCCESS" in large, bold, white letters, surrounded by icons representing various career and educational paths. Below the banner is a navigation menu with categories like "Students", "Employers", and "Staff". The "Students" menu is expanded, showing sub-items such as "Starting Out", "Some Ideas", "Clear Idea", "Upskill", "Placement", "Jobs And Experience", "Postgraduate Study", "Key Information And Resources", and "Talk With Us". The "Postgraduate Study" item is highlighted. The main content area displays a list of links for postgraduate study, including "What is postgraduate study?", "Should I do a postgraduate course?", "What is a Masters/PhD/Conversion Course?", "How do I find postgraduate courses?", "Maynooth University Postgraduate Open Day - Presentations", "Entry Requirements And Closing Dates", "Applications And Personal Statements", "Funding", "Study Abroad", and "PhD Resources".

What is Postgraduate Study?

- Typically, any course you do after your degree is postgraduate study
- There are many different types of courses
- Most are Level 9*
- Taught courses are popular with many students – these are similar to your undergraduate educational experience – they may include a significant piece of research work too.
- Research Masters usually involve research work only
- PhD – research doctorates involve a significant piece of research – many structured PhD programmes also involve some taught modules
- Professional doctorates can involve research, class and relevant professional training experience

Type	Course e.g.
Taught (Level 9*)	Higher Diploma* (Level 8) Postgraduate Diploma Professional Diploma Masters (MA, MSc) M.Soc.Sc Professional Masters (e.g. PME)
Research (Level 9)	MA, MLitt,
Research (Level 10)	PhD, EdD Professional Doctorate

Conversion Courses

Usually open to students from any degree

- Allows you to change direction in your studies
- Enter a new field of study
- Can be 1-2 years in length

Micro-credentials

<https://www.maynoothuniversity.ie/study-maynooth/postgraduate-studies/micro-credentials-maynooth>

- Have a look at micro-creds courses offered in many universities now
- Shorter courses – a very good way to upskill in a specific area of interest to you

How do applications work?

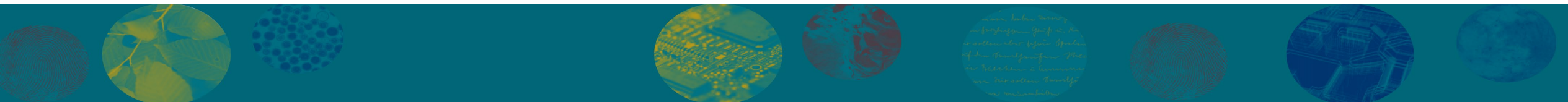
Application process and entry requirements vary from course to course and college to college

Entry requirements

- Vary between courses/colleges
- May specify a certain grade in your final degree
- Some courses award places based on penultimate year results
- May make conditional offer before final grades awarded
- Some courses require relevant experience

Closing dates vary between courses

- Confirm college process for this...rolling application / apply asap?



Applications

- Online – usually on the universities' own websites
- Set up an account on for any university you are interested in
- You can go in and view the application form – useful to be familiar with the forms
- Application forms usually require a Personal Statement explaining why you want to do the course ... *ask us we'll help you with this!*
- *Personal Statement Tips -*
[https://www.maynoothuniversity.ie/sites/default/files/assets/document//Personal%20Statements Information2024.pdf](https://www.maynoothuniversity.ie/sites/default/files/assets/document//Personal%20Statements%20Information2024.pdf)

Divide your **personal statement** into several paragraphs.

State the course for which you are applying.

Why do you want to do the course/research?

- Be clear about why you have chosen this course - how did your interest in this field develop?
- Show your enthusiasm for the course – give details of any projects, dissertations, modules that are relevant?

Why this university?

- Show that you have done some research on the department and institution
- Explain why you would value the opportunity to study with them.

Divide your personal statement into several paragraphs.

Why you?

- What academic skills do you have to offer?
- What personal skills will you bring to the course?
- Highlight your skills and give evidence of how you have developed and used these skills in the past.
 - communication skills, ability to work as part of a team, strong self-motivation, organisational skills.
- Here you are telling them what you will bring to the course.
- What are your strengths?
- What is the relevance of your first degree to this field of study?
- If relevant, point out any challenges you have faced and how you have overcome them e.g., any circumstances that may have affected your academic results in past years.

Sum-up

- Short paragraph highlighting your commitment to this course/career area and your willingness to work hard to meet your goals etc.

Where to find Courses

Search websites of any universities in which you are interested

Course search websites –



When it comes to your learning journey, the possibilities are endless. But it can be a little overwhelming. Qualifax can help you discover your pathway.

Our comprehensive database of up to 15,000 courses is here to help students.

Ireland

Qualifax <http://www.Qualifax.ie> | gradireland.com

<https://gradireland.com/careers-advice/postgraduate-study>

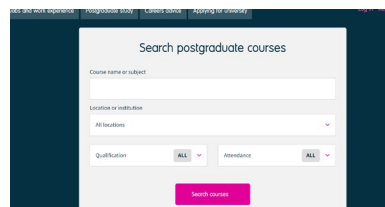
UK

Prospects <https://www.prospects.ac.uk/postgraduate-courses>

[courses](https://www.prospects.ac.uk/postgraduate-courses)

Abroad <https://www.prospects.ac.uk/postgraduate-study/study-abroad>

USA <https://www.internationalstudent.com/school-search/usa/> | <https://www.petersons.com/college-search.aspx>



Funding

- Check websites of universities for details of their funding options

- SUSI

Part-time & Full-time Master's & PhD opportunities
Apply online at www.pac.ie/maynoothuniversity

A Maynooth Education

- Undergraduate Studies
- Postgraduate Studies
 - Postgraduate Masters, Diplomas & Certificates
 - PhD and Research Masters
 - Fees, Funding & Scholarships**
 - News
 - Events
 - How to Apply for a Postgraduate Programme
 - MU Ask a Student
 - Current Postgraduate Students
 - Learning Support
 - Springboard- & Human Capital Initiative Pillar One Programmes
 - PhD Application process
 - Postgraduate Prospectus
 - Recognition of Prior Learning
 - Micro-credentials at Maynooth
 - Postgraduate Open Day
- Certificates & Short Courses
- How to Apply
- Academic Departments
- International Students
- Mature Students
- Tackling Educational Disadvantage (HEAR)
- Download Prospectus & Booklets
- Why Maynooth?

Further Information

- Student Grant: SUSI
- Taught Master's Scholarships

Fees

Follow this link to view the [Postgraduate Fee Schedule](#) for EU and International Postgraduate Students.

Postgraduate Scholarships & Funding

Full details on funding available to postgraduate students is available below:

MU Research Scholarships

- [John & Pat Hume Doctoral Awards](#) - The John & Pat Hume Doctoral Scholarship Awards will re-open for applications on Friday 2nd February 2024.
- [Maynooth University Teaching Studentships](#) - Rolling Applications
- [MU Doctoral Scholarships](#) - Rolling Applications
- [Research scholarship opportunities at Maynooth University](#)

External Research Student Scholarships

- [External Research Student Scholarships](#)

Taught Masters Scholarship

- [MU Taught Masters Scholarships](#)
- [RPL Taught Masters Scholarships](#)
- [30% Club Scholarship](#)

Additional Maynooth University Departmental Scholarships

- Anthropology: [Susan Hunter Postgraduate Scholarship](#)
- Economics: [Edgeworth Graduate Student Scholarship](#)
- Law: [Doctoral Scholarship](#)
- Nua-Ghaeilge: [Oireachtas na Gaeilge](#)
- School of Business: [PhD Scholarship on Repurposing](#)

Maynooth University International Office Scholarships

- [Maynooth University International Office Scholarships](#)


Back to top



<http://www.maynoothuniversity.ie/careers/students>



- Careers and Employability Service
- Students
 - Starting Out
 - Some Ideas
 - Clear Idea
 - Upskill
 - Placement
 - Jobs And Experience
 - Postgraduate Study
 - Key Information And Resources
 - Talk With Us
- Employers
- Staff
- Careers Connect | Placement Connect
- Graduate Career Stories
- Student Skills and Success



I need help getting started.




I have some ideas of my next step



I have a clear idea of my next step



Upskill Programmes



Academic Placement



Jobs And Experience



Postgraduate Study

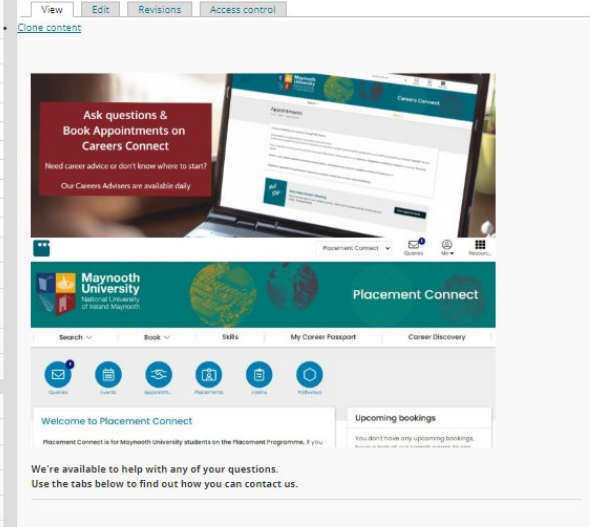


Key Information And Resources



Talk To Us (Questions & Appointments)

- Careers and Employability Service
- Students
 - Starting Out
 - Some Ideas
 - Clear Idea
 - Upskill
 - Placement
 - Jobs And Experience
 - Postgraduate Study
 - Key Information And Resources
 - Talk With Us
- Employers
- Staff
- Careers Connect | Placement Connect
- Graduate Career Stories
- Student Skills and Success
- About Us
- Archive
- Contact
- Events
- FAQs
- News
- People



- Send us a query or book an appointment in Careers Connect | Placement Connect
- Using Careers Connect | Placement Connect - Current Students
- Using Careers Connect - Alumni
- Appointment Terms & Conditions






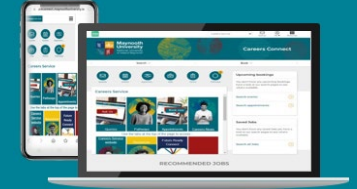
**Ollscoil
Mhá Nuad**
Ollscoil na hÉireann
Má Nuad



**Careers and
Employability Service**

Any questions?

- Use **Careers Connect** to engage with us
 - Appointments
 - Teams Appointments or In-Person Appointments
 - Send us your Questions - Click Queries 



CAREERS CONNECT PORTAL



WEBSITE

www.maynoothuniversity.ie/careers



FIND US ON SOCIAL MEDIA