

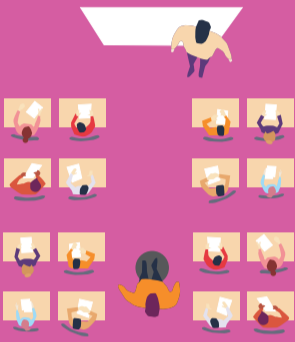


MODELS OF **TEAM TEACHING**



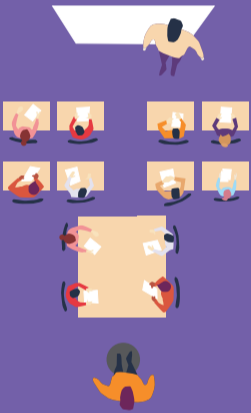
ONE TEACH, ONE OBSERVE

Where one teacher leads the lesson while the other teacher observes their partner teacher and/or the students.



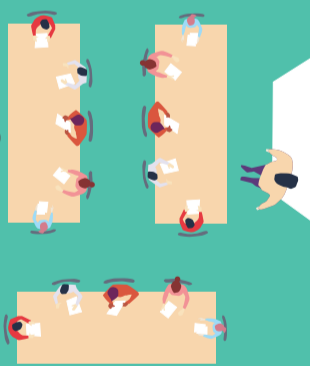
ONE TEACH, ONE SUPPORT

Places one teacher in the lead role and the other teacher acts as a support for students in the classroom. The type of support provided will depend on the lesson and students' needs.



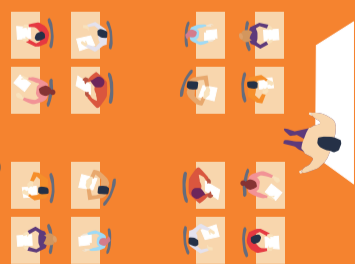
ALTERNATIVE TEACHING

Provides for one teacher leading the lesson with a larger group while the other teacher engages with a smaller group, perhaps with alternate material, according to their needs.



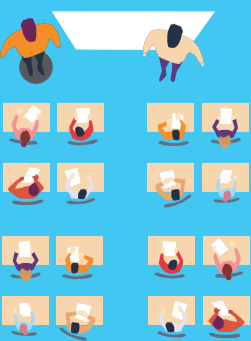
STATION TEACHING

Allows teachers to facilitate project work or group processes among students working in groups. Teachers can rotate around the groups providing specific instruction while some groups work independently.



PARALLEL TEACHING

Provides for the splitting of the class into two, possibly evenly-sized groups, to maximise participation. Each teacher leads the instruction with one of the groups (possibly in separate spaces).



TEAM TEACHING

Involves two teachers sharing responsibility for the class equally. While their roles may change over the course of a lesson, both teachers are centrally involved in facilitating the learning in the lesson.